



The Professional Truck Parts People
100 YEARS STRONG
 Since 1911



COOLING SYSTEMS

Parts & Accessories



NEW WATER PUMPS

FEATURES	BENEFITS
OEM or better specifications, factory and aftermarket engineered improvements	Assures top performance
Includes premium gaskets, hardware and seals for trouble free installation	Packaged in corrosive inhibiting plastic bags
100% functionally leak tested to insure leak free installation	
Backed by the Haldex 1 year / 100,000 mile warranty	True peace of mind

Part No.	Description	Engine Application	Pully/Gear Desc.	Mfg. No.	Casting No.	Alternate No.
RW6069	Cummins Engine ISX	ISX Engine w/ a 10 Groove	10 Groove	4026702	2201-10C	RW4069X
RW1170	Cummins Big Cam III, IV	NTC 290, 350, 400; Formula 290, 350	4.675 Dia. Multi-Groove Pulley / 4.5" Impeller Vented	3022474 (3801788)	218274	RW1170X / RW1170RX
RW1172	Cummins Big Cam IV	300, 350, 400; Fleet 300; NTC-Formula 300, 350, 400; NTC-475	4.275 Dia. Multi-Groove Pulley / 4.5" Impeller Vented	3801708	3045163	RW1172X / RW1172RX
RW1173	Cummins Big Cam	Idle - Multi-Groove Engines	Multi-Groove Pulley	AR45189 Pulley	215397	RW1173X / RW1173RX
RW6075	Cummins B-Series Engine	B-Series 4 & 6 Cylinder Engine	Multi-Groove Pulley	3802358 (3802004)	3913132	RW6075X / RW6075RX
RW6077	Cummins C-Series Engine	C-Series Engine	Multi-Groove Pulley	3802081	3903357	RW6077X / RW6077RX

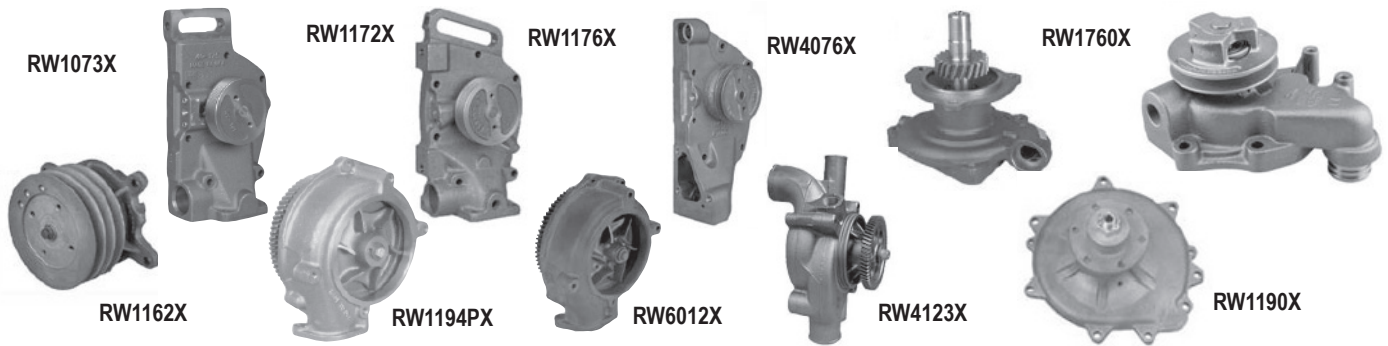
REMAN WATER PUMPS

PREMIUM "P" SERIES WATER PUMPS

Look for the "P" after the part number

- Remanufactured in the USA
- Full range product offering of medium and heavy duty OEM or better specifications
- Includes premium gaskets, hardware and seals for trouble free installation
- 100% functionally leak tested to insure leak free installation
- Backed by the Haldex 1 year / 100,000 mile warranty

- Engineered to provide longer life
- Silicone carbide seals / OEM bearings / HD metal back plates / high capacity impellers

Part No.	Description	Engine Application	Pully/Gear Desc.	Mfg. No.	Casting No.	Alternate No.
RW6014X	Caterpillar C15	C-15	Gear Driven/Bolt-on Gear	10R0484	-	-
RW1162X	Caterpillar 3208 Engine	3208 - Bolt on Pulley (3 Belt)	3 Belt - Bolt on Pulley	2W1225	9N3076	RW1162 / RW1162RX
RW1194PX	Caterpillar 3206B/C Engine	3208B & 3208C / Premium Seal	Flat Gear	7W7019 / 7C4957 / OR8217	9N5034	RW1194 / RW1194PRX
RW6012X	Caterpillar Engines	3406B/C/E	Dome Shaped Gear Driven / O-Rings & Gaskets for WP Only	613890 / OR4120 / OR8330 / OR8218 / 10R0483	100-7479	RW6012 / RW6012RX
RW1310X	Caterpillar New Generation Engines	DT360 / DT466	Stamped Steel Impeller	N/A	1821935C1 1821935C3	RW6313
RW4011X	Caterpillar	3176B, C-10, C-12	-	OR8767/1006944 OR37097/OR0705	105-4213 105-4214	-
RW1073X	Cummins N14 Series Engine	N14 - 310, 330, 350, 370, 410 Engines	Multi-Groove Pulley	3803605 (3803361)	3069644-3076523	RW1073 / RW1073RX
RW1170X	Cummins Big Cam III, IV Engine	NTC 290, 350, 400; Formula 290, 350	4.675 Dia. Multi-Groove Pulley / 4.5" Impeller Vented	3022474 (3801788)	218274	RW1170 / RW1170RX
RW1172X	Cummins Big Cam IV Engine	300, 350, 400; Fleet 300; NTC-Formula 300, 350, 400; NTC-475	4.275 Dia. Multi-Groove Pulley / 4.5" Impeller Vented	3801708	3045163	RW1172X / RW1172RX
RW1176X	Cummins 88 Big Cam IV Engine	NTC 300, 315, 350, 365, 400	Multi-Groove Pulley	3803138 (3803030)	3062899	RW1176 / RW1176RX
RW4069X	Cummins Engine ISX	ISX Engine w/ a 10 Groove	10 Groove	4026702	2201-10C	RW6069
RW4068X	Cummins Engine ISX	ISX Engine w/ a 12 Groove	12 Groove	4089910	2201-10C	-
RW6075X	Cummins B Series Engine	B Series Engine / 4 & 6 Cylinder	Multi-Groove Pulley	3802358 (3802004)	3913132	RW6075 / RW6075RX
RW4076X	Cummins L10 & M11 Engines	L10-310E / L10-330E / M11 - 1991 & Up	3 Hole Mount	3803403	3882615	RW4076RX
RW4077X	Cummins M11 Engine	M11 ISM Application	3 Hole Mount - ShortShaft	3800745	N/A	N/A
RW1180X	Detroit Diesel 53 Series Engine	Series 53	Left Hand 2 Groove Pulley	5144685	5144688	RW1180RX
RW1190X	Navistar DT466 Engine	DT466	Belt Driven - Pulley Not Supplied	685155C92	677856C1	RW1190 / RW1190RX
RW1760X	Ford Engines	6.6L / 7.8L	Aux. Mount 3/4" Outlet - Cab Over	E9TZ8501B	E7HN8508AA	RW1760RX
RW4114X	Navistar DT444E	7.3L DT444E	Direct Injection Engine	1831676C91 / 1823669C92 / 1831676C92	1822851C1	RW6114
RW4122X	Detroit Diesel 60 Series Engine	60 Series after 12/90	Premium Seal / Std Flow - 7 Vane Impeller	23505895 / 23520136 / R3518216	23505894	RW6122 / RW4122RX / RW4122PX / RW4122PRX
RW4123X	Detroit Diesel 60 Series Engine	60 Series after 12/90	Premium Seal / High Flow - 6 Vane Impeller	23522707	23512027	RW6123 / RW4123RX
RW4123PX	Detroit Diesel 60	60 Series after 12/90	Premium Seal / Metal	23522707	23512027	RW6123 / RW4123PRX

Automatic Belt Tensioners



49501
Mfg. #
Freightliner: 3937553



49502
Mfg. #
Freightliner: 1382514
Peterbilt: 1382514
Kenworth: 1900642



49504
Mfg. #
Freightliner: 21333544
Peterbilt: 1333542



49506
Mfg. #
Freightliner: 1600649



49509
Mfg. #
Freightliner: 2178938
Peterbilt: 2178938
Kenworth: 2178938



49513
Mfg. #
Freightliner: 3934823
Kenworth: N/A



49514
Mfg. #
Freightliner: 0127425000
Peterbilt: N/A



49515
Mfg. #
Freightliner: 4004933
Peterbilt: 3102888
Kenworth: 4004933



49517
Mfg. #
Freightliner: 3957433
Kenworth: 3957433



49520
Mfg. #
Freightliner: 0127846000



49521
Mfg. #
Freightliner: 3936213
Peterbilt: 3945527
Kenworth: 3976831



49527
Mfg. #
Freightliner: 3400885
Peterbilt: 3680194
Kenworth: 3400885



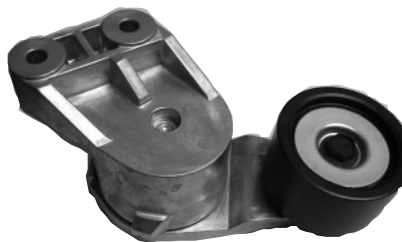
49530
Mfg. #
Mack: 87GB41A



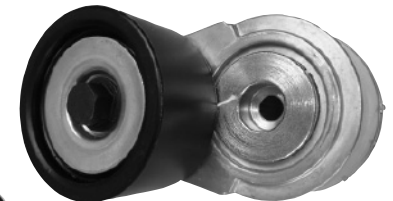
49563
Mfg. #
Freightliner: N/A
Peterbilt: 3682946
Kenworth: 3682946
Mack: 3682946



49545
Mfg. #
Freightliner: 2002279
Peterbilt: 2002279
Kenworth: 2002279



49572
Mfg. #
Volvo: 21404578



49582
Mfg. #
Freightliner: 3104149
International/Navistar: 3104149, 3682683
Kenworth: 3104149, 3682683
Mack: 3682683
Peterbilt: 3104149, 3682683
Volvo: 3104149, 3682683

Power-Seal			Lined Clamps			Constant Torque		
P/N	Min. Dia.	Max. Dia.	P/N	Min. Dia.	Max. Dia.	P/N	Min. Dia.	Max. Dia.
B3504	7/32"	5/8"	B62036	1-13/16	2-3/4	B9406	9/16"	13/16"
B3506	1/4	25/32	B62040	2-1/16	3	B9408	11/16	15/16
B62006	7/16	25/32	B62044	2-5/16	3-1/4	B9410	13/16	1-1/16
B62008	1/2	29/32	B62048	2-9/16	3-1/2	B9412	15/16	1-1/4
B62010	9/16	1-1/16	B62052	2-13/16	3-3/4	B9416	13/16	1-1/2
B62012	11/16	1-1/4	B62056	3-1/16	4	B9420	13/16	1-3/4
B62016	13/16	1-1/2	B62064	3-9/16	4-1/2	B9424	1-1/16	2
B62020	13/16	1-3/4	B62072	1-7/8	5	B9428	1-5/16	2-1/4
B62024	1-1/16	2	B62088	3-1/8	6	B9432	1-9/16	2-1/2
B62028	1-5/16	2-1/4	B62096	3-5/8	6-1/2	B9436	1-13/16	2-3/4
B62032	1-9/16	2-1/2				B9440	2-1/16	3



HOSE BARB FITTINGS



BELTS



GOODYEAR

Need Release®

Extended Service Coolant Filter

- Eliminates over-inhibited cooling systems
- Reduces cost
- Minimizes waste





Universal 3-Way Test Strips

The first & only test strip designed for all heavy-duty coolant types. A quick & effective way to test your cooling system in both conventional & extended life coolant. 25 test strips/bottle

TS200




Antifreeze with SCA Pencool

Prestone
2087-40 Fuschia, 1 Gallon Antifreeze
2087-15 Fuschia, 1 Gallon Antifreeze

Shamrock
2087M-40 Fuchsia, 1 Gallon Pre-Mixed 50/50
2087M-15 Fuchsia, 55 Gallon Pre-Mixed 50/50



Premium Hy-T Black - 50 Ft. Rolls

Hy-T black heater hose meets SAE J20R3 specifications.


GY650001/2"
GY650045/8"
GY650093/4"
GY65012 1"

Premium Hy-T Red

Hy-T heater hose is made with a tough Versigard rubber cover & tube to resist heat, ozone, & anti-freeze solutions. Built to withstand the pressure of today's automobiles' trucks, & busses. Minimum burst pressure of 140 PSI. Expands easily over heater connections, resists tearing & splitting. Available in red cover-up through 3/4" I.D. Premium Hy-T Red heater hose meets SAE J20R3 specifications.

GY65020 1/2"
GY650235/8"
GY650263/4"

Hi-Miler 50 Ft. Rolls



Hi-Miler is outstanding for strength & heat resistance. Made with high temperature Versigard synthetic rubber. Reinforced with heat-resistant Flesten cored that is pound for pound, stronger than steel. Built to outlast standard heater hose without the cost of more expensive silicone hose. Readily recognizable blue cover. Meets SAE J20R3 specifications.

GY65028 3/8"
GY65029 1/2"
GY65031 5/8"
GY65033 3/4"
GY65035 1"
GY65037 1-1/4"

April 2011 (WaterPumps09)



MIDWEST WHEEL COMPANIES

100 YEARS STRONG

HDA TRUCK PRIDE

VISA MasterCard DISCOVER

Iowa

Des Moines
1436 E. Ovid
(515) 265-1491
Fax (515) 265-4120
Parts Fax (800) 314-4329
(800) 888-0248

Cedar Rapids
200 50th Ave. S.W.
(319) 365-4453
Fax (319) 365-6327
(800) 332-5435
Fax (877) 706-6085

Davenport
8502 Northwest Blvd.
(563) 322-2671
Fax (563) 322-5940
(800) 553-1886

Truck Parts SUPER STORE™

Clear Lake
840 Hwy. 18 W.
(641) 357-7101
Fax (641) 357-8190
(800) 397-5630
Fax (800) 548-9674

Sioux City
1819 E. 4th St.
(712) 252-7969
Fax (712) 252-6149
(800) 943-3534

Missouri

Kansas City
5801 Front St.
(816) 471-1552
Fax (816) 471-0813
(800) 821-7402

Grandview
14817 So. 71 Hwy.
(816) 318-9111
Fax (816) 318-9114
Toll Free (866) 318-9111