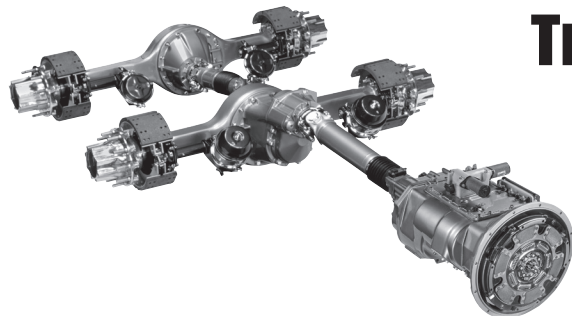




The Professional Truck Parts People
100 YEARS STRONG
 Since 1911



Transmissions & Differentials

Exchange or Repair

We have remanufactured transmissions and differentials in stock and our Kansas City location has a complete gear shop to repair/rebuild your units.

Transmissions

Part #	Model	Description
Allison Automatic Transmissions		
AT545R29514623	AT545	Modulated
AT545R29537853	AT545	Reduced Modulated
Eaton-Fuller Transmissions		
FRO15210CP	FRO15210C	10 Speed
FRO16210C	FRO16210C	10 Speed
FS-6205-A	FS-6205-A	5 Speed
RTLO-16610-B	RTLO-16610-B	10 Speed
RTLO-16713AR	RTLO-16713A	13 Speed
RTLO-16913AR	RTLO-16913A	13 Speed
RTLO-18913AR	RTLO-18913A	13 Speed
RTLO-18718BR	RTLO-18718B	18 Speed
RTLO-18918BP	RTLO-18918B	18 Speed
RTO14909MLLR	RTLO14909MLL	11 Speed
Rockwell 10 Speed Transmissions		
RMX10145A2S	RMX10145A2S	Use RMX10165A2SPR
RMX10155A2S	RMX10155A2S	Use RMX10165A2SPR
RMX10165A2SPR	RMX10165A2SP	10 Speed with Pump
MOG10AMSPR	MO14G10AM	G Platform Automatic Shift
Spicer Transmissions		
CM-5252-A	CM-5252-A	5 Speed

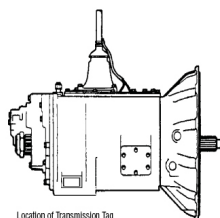
*Cores must be same model & type.



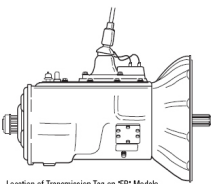
We Stock the Parts You Need!

Locating Transmission Tag and Identifying Model Designation

Transmission model designation (i.e. RT-12609A), and other transmission identification information, are stamped on the transmission tag. To identify the transmission model designation (nomenclature), locate the tag on the transmission and then locate the model designation number as shown.



Heavy Duty Models



Location of Transmission Tag on 7R Models



TECH TIP

Please remove the bell housing, PTO shift tower, speedometer pick-up and the output yoke from your old transmission prior to returning it for core credit.

Drain oil prior to returning for core credit!

Differentials

DS404R3.36
DS404R3.55
DS404R3.70
DS404R3.90

RS404R3.36
RS404R3.55
RS404R3.70
RS404R3.90

19050-S-6.50

21065-S-4.63

DS402R3.36
DS402R3.55
DS402R3.70
DS402R3.90

RS402R3.36
RS402R3.55
RS402R3.70
RS402R3.90

Rockwell Differentials

Tandem Front

RD2014SR3.42
RD20145R3.58
RD20145R3.73

RDL20145R3.73
L-Traction Control

QD100-3.55
QD100-3.90

IHC Differentials Tandem Front

Single or Tandem Rear

RR2014SR3.42
RR20145R3.58
RR20145R3.73

RRL20145R3.73
L-Traction Control

-
SQHR-4.44

SSHR-5.29

Single or Tandem Rear RA355R-4.10

NOTE: DSP and RSP can be serviced by the older series differential, provided that the installer uses the older style housing hardware parts (Fuller Kit #511600). See bulletin #ABIB-0210-1 on www.roadranger.com for more details.

TECH TIP

Find the Ratio,

By simply dividing the ring gear tooth count by the pinion gear tooth count. For example, if we divide a ring gear with 41 teeth by a pinion gear with 10 teeth we find that the gear ratio is 4.10:1 ($41/10 = 4.10$).

Cores must be like for like and in good condition for full credit to be issued.

Transmission Jacks & Accessories

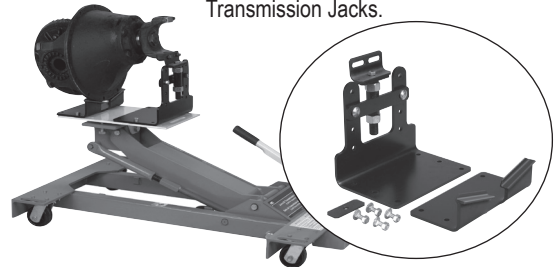


Transmission Jack 5019A

- The 8-1/4" low height is perfect for aerodynamic trucks with low ground clearance.
- Special mounting adapter (# 540231) fits popular Eaton® Fuller® RoadRanger® transmissions used on nearly all Class 7 & 8 heavy-duty trucks. Mounting plate angle is adjusted with the turn of a wrench.
- Degree of tilt: 20° back, 15° forward, 12° side to side.
- Swiveling pump handle permits ease of operation in restricted working spaces. Fast-acting pump quickly raises lifting arm.

Differential Mounting Adapter 553516

Differential mounting adapter mounts easily using existing bolt patterns. Fits the most common differentials currently in use on Category 7 and 8 Heavy Duty Trucks. Including: Eaton, Fuller, Rockwell, Meritor, Spicer, International, and Mack. For use on OTC 5019A/ 5078 and Stinger 1522A Transmission Jacks.



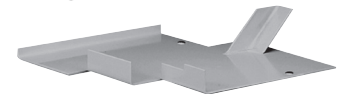
Mack Transmission Mounting Brackets 540232

Provides a stable platform for Mack T200 series transmissions.



Eaton Fuller RoadRanger Auxiliary Housing Adapter 49644

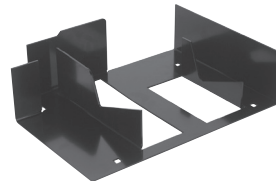
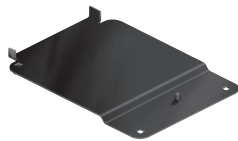
Bolts directly to the counter-shaft bearing caps to provide a stable platform for removing & installing the auxiliary housing.



Eaton Fuller RoadRanger® Transmission Adapter 540231

Eaton® "Lightning" Adapter 528150

Used with the #5019A transmission jack.



RoadRanger® Transmission Adapter 543284

RoadRanger® transmission adapter for model series FTO-11210C to FRO-18210C that are equipped with an integrated collar. Used with the #5019A transmission jack.



100 YEARS STRONG



Des Moines

1436 E. Ovid
(515) 265-1491
Fax (515) 265-4120
Parts Fax (800) 314-4329
(800) 888-0248

Cedar Rapids

200 50th Ave. S.W.
(319) 365-4453
Fax (319) 365-6327
(800) 332-5435
Fax (877) 706-6085

Clear Lake

840 Hwy. 18 W.
(641) 357-7101
Fax (641) 357-8190
(800) 397-5630
Fax (800) 548-9674

Kansas City

1819 Troost Ave.
(816) 471-1552
Fax (816) 471-0813
(800) 821-7402

Iowa

Truck Parts
SUPER STORE™

Davenport

8502 Northwest Blvd.
(563) 322-2671
Fax (563) 322-5940
(800) 553-1886

Sioux City

1819 E. 4th St.
(712) 252-7969
Fax (712) 252-6149
(800) 943-3534

Missouri

Grandview

14817 So. 71 Hwy.
(816) 318-9111
Fax (816) 318-9114
Toll Free (866) 318-9111