



# SAVE! *Grote* Hi Count LEDs\*

## Hi Count®, 2" BEEHIVE LAMP

- Uses the same UBS double-seal pigtail as the incandescent version for a quick Plug-and-Go® retrofit
- Twist-on mounting for easy installation
- Concentric, multiple diode layout
- Fits all popular mountings and grommets



G3092-3 - Red .....\$5.39  
G3093-3 - Yellow .....\$5.39

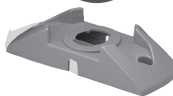
**Sealed Marker Lamp Pigtail - Single Seal**  
67050 - 6" long, Ring Terminal Ground, Blunt Cut Wires



**2-5/16" Hole Open Back Grommet**  
92120 - Fits 2" round lamps & panel thickness up to 1/4"



**Twist-On, Surface Mounting Bracket**  
43690 - Fits 2" & 2-1/2" lamps, meets PC requirements



## Hi Count®, 56 DIODE, OVAL, STOP/TAIL/TURN LED LAMP

- Female pin terminations accept all popular plug-in connectors
- Fits same connections as female incandescent lamps
- Concentric, multiple diode look
- Lower amp draw of LEDs allows for use of more lamps without draining vehicle power
- LEDs provide greater stopping distance for trailing vehicles



G6002-3 - Red .....\$17.99  
G6003-3 - Yellow ....\$20.26

**S/T/T 3-Wire 90° Plug-In Pigtail for Female-Pin Lamps**  
66843 - 18" long, Long Chassis Ground, Blunt Cut Wires, Star Ring Terminal



**Open Back Grommet for Oval Lamps**  
92420 - Fits 2.5" x 6.76" oval hole & panel thickness up to 1/4"



## Hi Count®, 3-DIODE LAMP

- Hermetic lens-to-housing seal
- Uses the same UBS double seal pigtail as the incandescent version for a quick Plug-and-Go™ retrofit
- High diode count layout
- Fits popular mountings and grommets



G1502-3 - Red.....\$4.09  
G1503-3 - Yellow .....\$4.09

**Sealed Marker Lamp Pigtail**  
67050 - 6" long, Ring Terminal Ground, Blunt Cut Wires

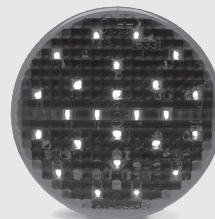


**Grommet**  
15702 - Fits panel thickness up to .250"



## Hi Count®, 4" STOP/TAIL/TURN LED LAMP

- Female-pin termination accepts all popular plug-in connectors
- Concentric, multiple diode layout
- Fits all popular mountings and grommets



G4002-3 - Red .....\$12.99  
G4003-3 - Yellow ....\$17.83

**S/T/T 3-Wire 90° Plug-In Pigtail for Female-Pin Lamps**  
66843 - 18" long, Long Chassis Ground, Blunt Cut Wires, Star Ring Terminal



**Open Back Grommet for 4" Round Lamps**  
91740 - Fits 4" round lamps & panel thickness up to 1/4", Requires 4-1/2" hole



**\*2 Year Grote Warranty**

## HI COUNT® DOUBLE FACE LED LAMP

### #G5300-3 Red & Yellow

- Attractive multiple diode design
- Heavy duty housing with hard-wired terminations for variable wiring options
- Lens replaceable design for easy maintenance with stylish chrome die-cast housing
- 17 diodes on either side

**\$37.28**

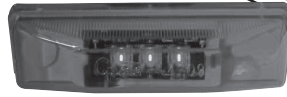


## HI COUNT® 3-DIODE LED LAMP

### #G1902-3 Red

### #G1903-3Yellow

- Hermetic lens-to-housing seal
- Concentric, multiple diode layout
- Fits all popular mountings and grommets



**\$5.56**



## HI COUNT® TURTLEBACK LED LAMP

### #G2102-3 Red 8-Diode

### #G2103-3Yellow 10-Diode

- Hermetic lens-to-housing seal
- Molded bullet with chassis ground ring terminal connection
- Concentric, multiple diode layout
- Fits all popular mountings and grommets



**\$7.52**



## HI COUNT® 2", 9-DIODE LED LAMP

### #G3002-3 Red

### #G3003-3Yellow

- Hermetic lens-to-housing seal
- Twist-on mounting for easy installation
- Concentric, multiple diode layout
- Fits all popular mountings and grommets



**\$4.99**



## HI COUNT® 2.5" LED LAMP

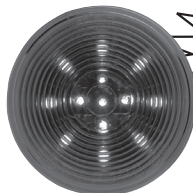
### #G1032-3 Red 13-Diode

### #G1033-3Yellow 13 Diode

### #G1092-3 Red 9-Diode

### #G1093-3Yellow 9 Diode

- Hermetic lens-to-housing seal
- Twist-on mounting for easy installation
- Concentric, multiple diode layout
- Fits all popular mountings and grommets



13-Diode  
**\$4.99**

9-Diode  
**\$7.49**



## HI COUNT® SQUARE CORNER 13-DIODE, SCALLOP LENS LED LAMP

### #G4602-3 Red

### #G4603-3Yellow

- Molded, snap-ring
- Bullet-proof potted circuit board for total protection against moisture and vibration
- Field replaceable lens



**\$6.45**



**MIDWESTWHEEL**  
COMPANIES

**HDA**  
TRUCK PRIDE

MEMBER

VISA MasterCard DISCOVER AMERICAN EXPRESS

**MIDWESTWHEEL.COM**

<b>Iowa</b>	<b>DES MOINES</b> 1436 E. Ovid Ave. OFFICE 515.265.1491 FAX 515.265.4120 PARTS FAX 800.314.4329 PARTS 800.888.0248	<b>CEDAR RAPIDS</b> 200 50th Ave. S.W. MAIN 319.365.4453 FAX 319.365.6327 PARTS FAX 877.706.6085 PARTS 800.332.5435	<b>CLEAR LAKE</b> 840 Hwy. 18 W. MAIN 641.357.7101 FAX 641.357.8190 PARTS FAX 800.548.9674 PARTS 800.397.5630	<b>Missouri</b>	<b>KANSAS CITY</b> 5801 E. Front St. MAIN 816.471.1552 FAX 816.471.0813 PARTS 800.821.7402
	<b>DAVENPORT</b> 8502 Northwest Blvd. MAIN 563.322.2671 FAX 563.322.5940 PARTS fax 800.553.1886	<b>SIOUX CITY</b> 1819 E. 4th St. MAIN 712.252.7969 FAX 712.252.6149 PARTS FAX 800.943.3534	<b>GRANDVIEW</b> 14817 So. 71 Hwy. MAIN 816.318.9111 FAX 816.318.9114 PARTS 866.318.9111		

**TRUCK PARTS SUPER STORE™**